

HF1

Document Trim size should be 6.1701" W x 4.7951" H

Document Bleed should be 0.125" beyond trim

Delete "Production Notes" layer prior to sending art



Indicates 0.125" document bleed area



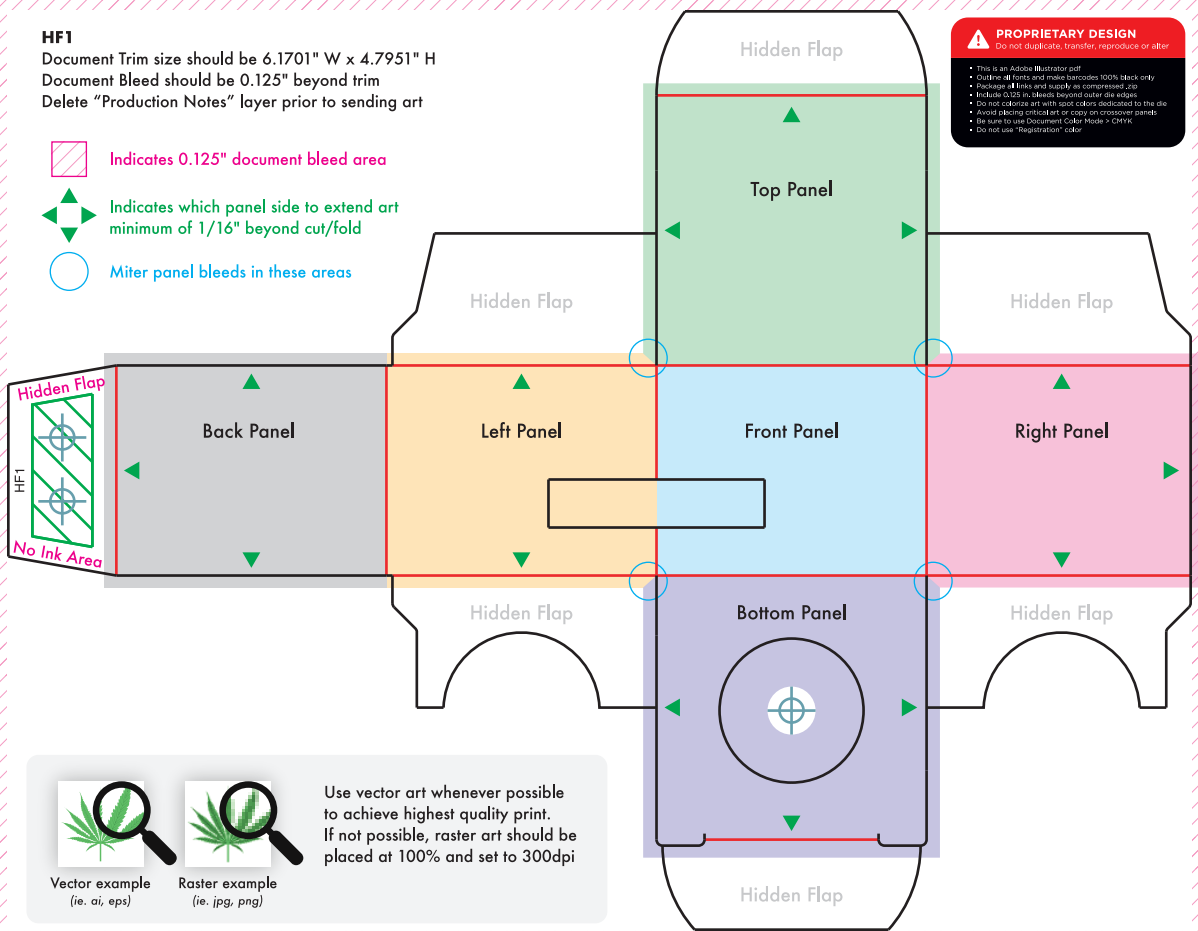
Indicates which panel side to extend art minimum of 1/16" beyond cut/fold



Miter panel bleeds in these areas

PROPRIETARY DESIGN
Do not duplicate, transfer, reproduce or alter

- This is an Adobe Illustrator pdf
- Outline all text and image borders 100% black only
- Package links and supply as compressed zip
- Include CMYK in bleeds beyond outer die edges
- Do not colorize art with spot colors dedicated to the die
- Avoid placing critical art or copy on crossover panels
- Be sure to use Document Color Mode > CMYK
- Do not use "Registration" color



Vector example
(ie. ai, eps)



Raster example
(ie. jpg, png)

Use vector art whenever possible to achieve highest quality print. If not possible, raster art should be placed at 100% and set to 300dpi