

HF6

Document Trim size should be 5.2326" W x 7.1389" H

Document Bleed should be 0.125" beyond trim

Delete "Production Notes" layer prior to sending art



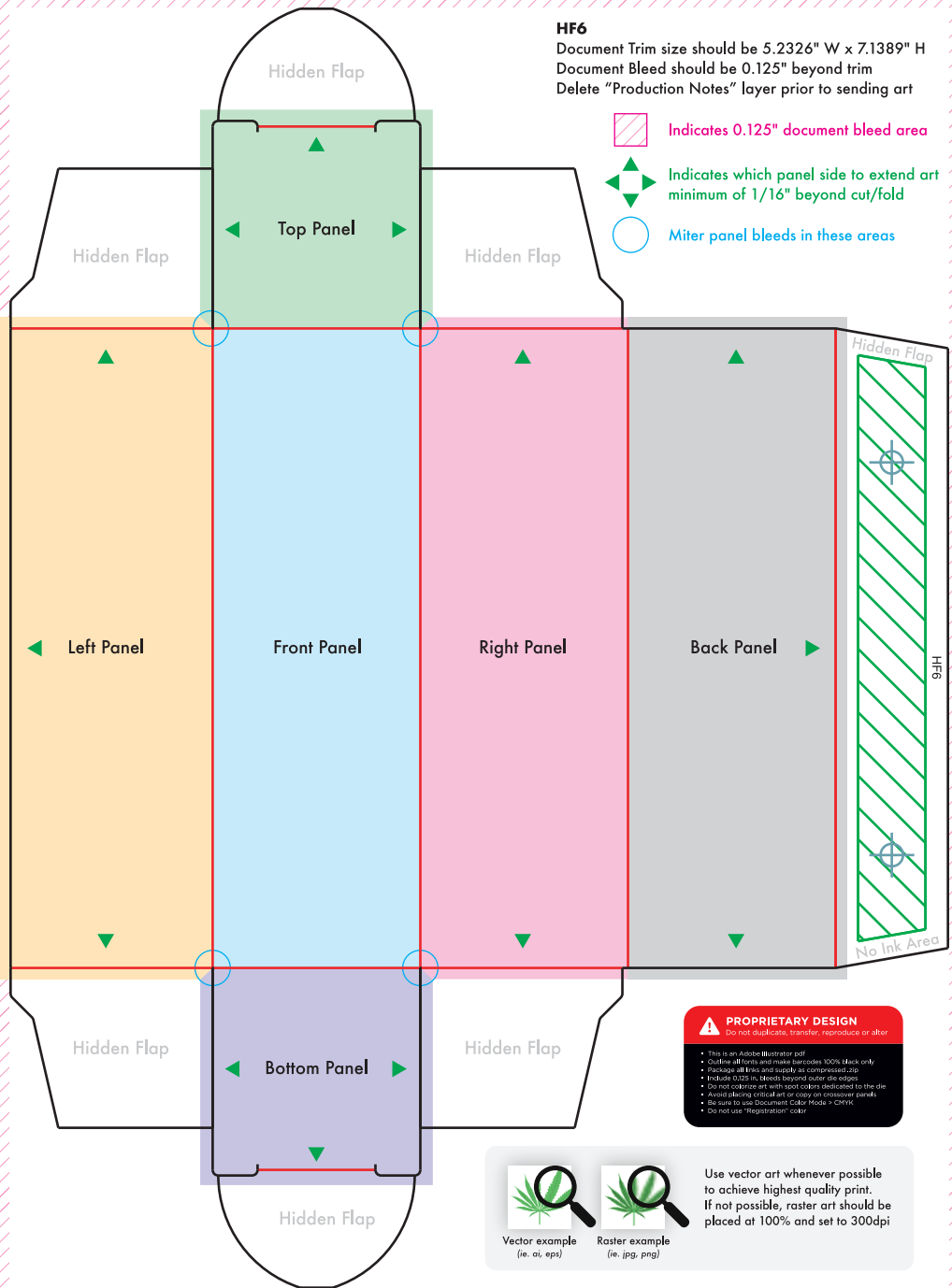
Indicates 0.125" document bleed area



Indicates which panel side to extend art minimum of 1/16" beyond cut/fold



Miter panel bleeds in these areas



PROPRIETARY DESIGN
Do not duplicate, transfer, reproduce or alter

- This is an Adobe Illustrator pdf
- Outline all lines and make strokes 100% black only
- Package all links and supply as compressed.zip
- Include 0.125 in. bleeds beyond outer die edges
- Do not colorize art with spot colors designated to the die
- Avoid placing critical art or copy on crossover panels
- Be sure to use Document Color Mode > CMYK
- Do not use "Registration" color


Vector example
(i.e. .ai, .eps)


Raster example
(i.e. .jpg, .png)

Use vector art whenever possible to achieve highest quality print. If not possible, raster art should be placed at 100% and set to 300dpi