


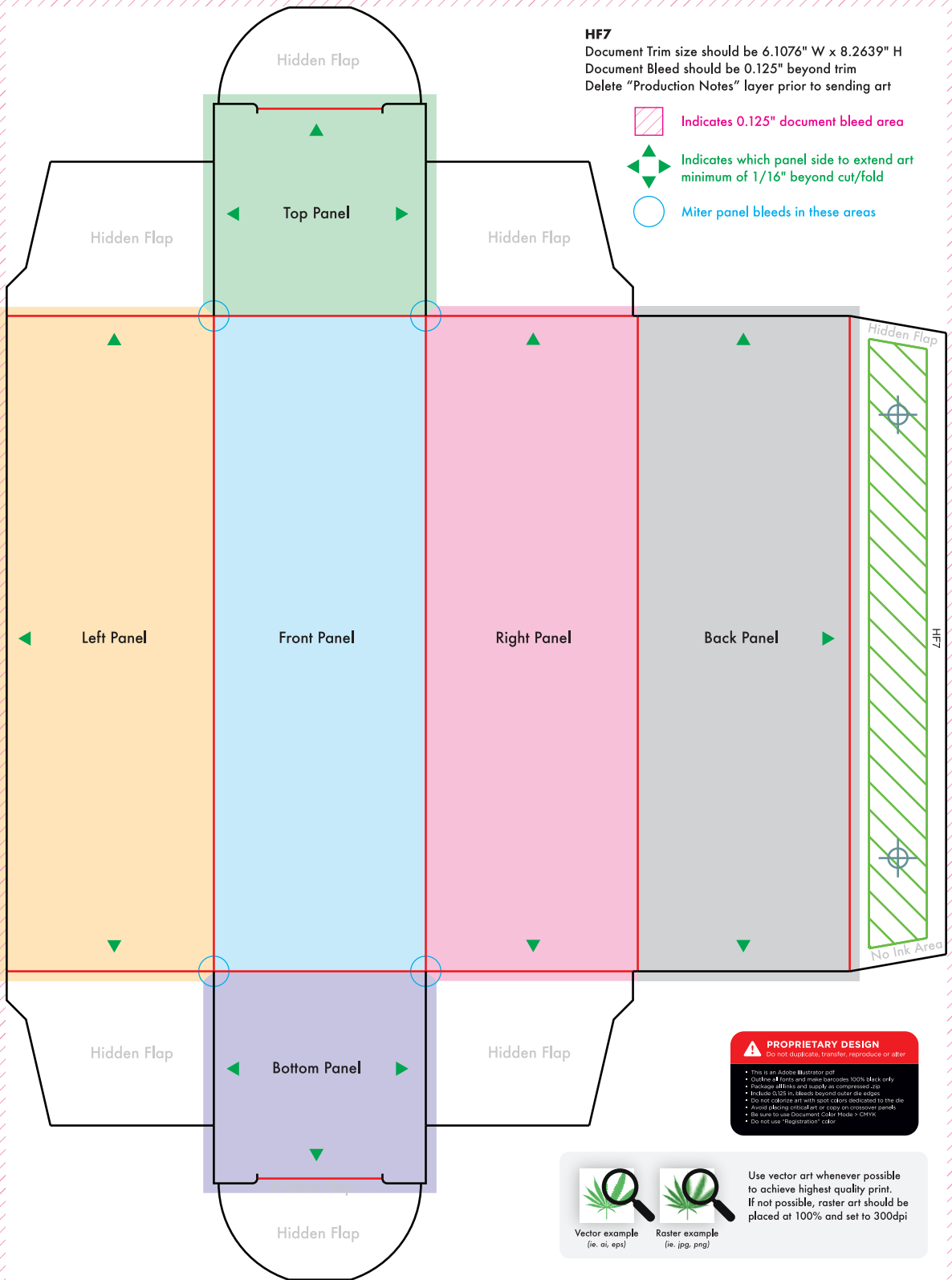


HF7

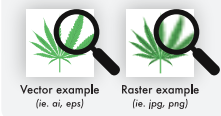
Document Trim size should be 6.1076" W x 8.2639" H
Document Bleed should be 0.125" beyond trim
Delete "Production Notes" layer prior to sending art

-  Indicates 0.125" document bleed area
-  Indicates which panel side to extend art minimum of 1/16" beyond cut/fold
-  Miter panel bleeds in these areas



PROPRIETARY DESIGN
Do not duplicate, transfer, reproduce or alter

- This is an Adobe Illustrator pdf
- Outline all fonts and make sure 100% black only
- Package all links and supply as compressed .zip
- Include bleed in sheets beyond outer die edges
- Do not colorize art with spot colors dedicated to the die
- Avoid placing art/copy on crease panels
- Be sure to use Document Color Mode > CMYK
- Do not use "Registration" color



Vector example
(i.e. .ai, .eps)

Raster example
(i.e. .jpg, .png)

Use vector art whenever possible to achieve highest quality print.
If not possible, raster art should be placed at 100% and set to 300dpi